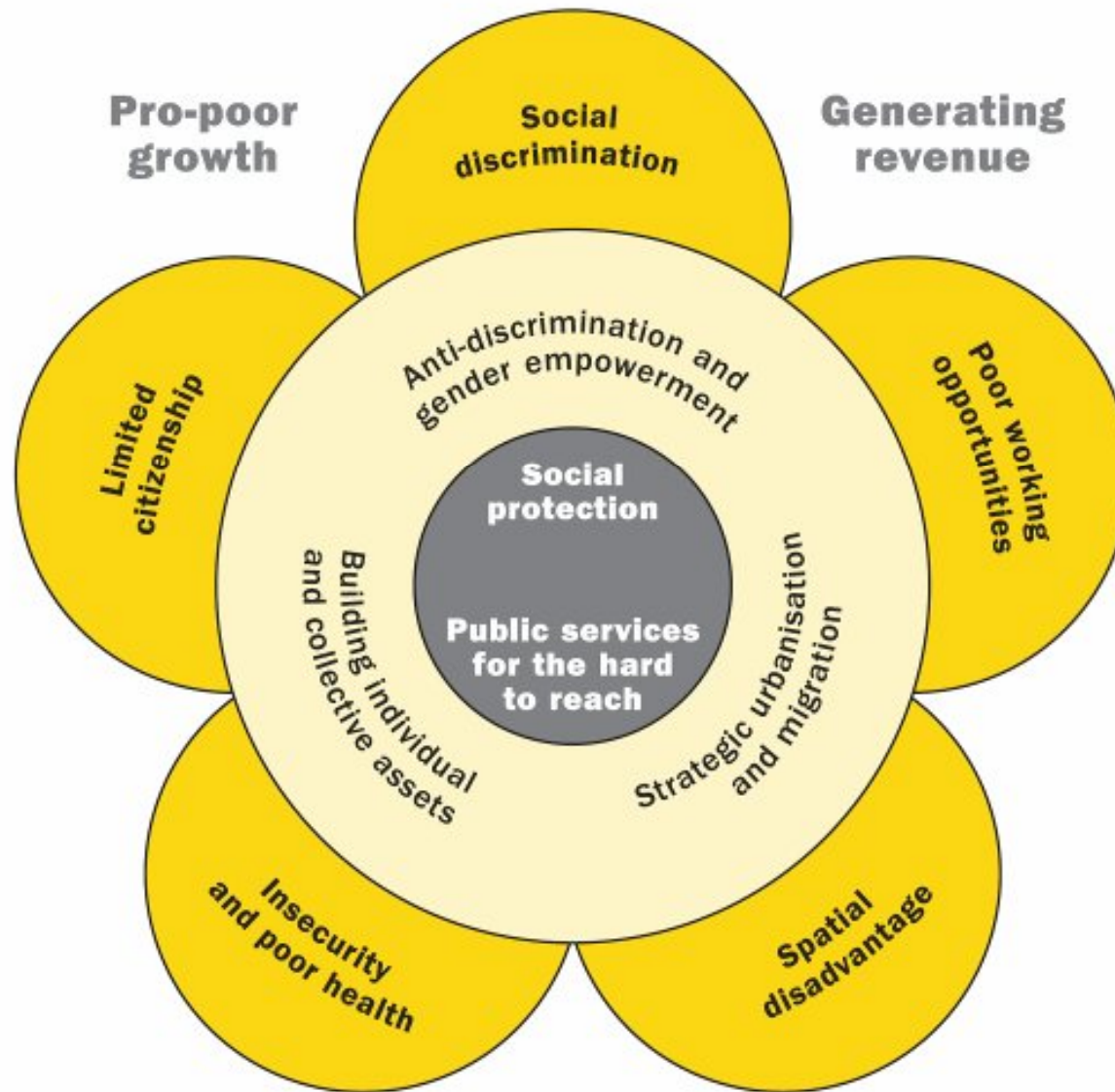


What are the solutions?



Growth Context

- Chronically poor can benefit from transformative growth (Vietnam)
- But chronic poverty can persist despite growth (Uganda) especially when *spatial poverty traps*
- Growth can create 'new poverty' (loss of assets as poor people expropriated)
- Poverty impact of growth in resource-rich countries (many of them '*fragile states*') is weak
- *Fiscal* link from growth-to-poverty is critical

Global Recession

- Declining commodity prices, lower remittances, lower government revenue
- Social protection essential – & growth promoting eg contingent cash transfers linked to schooling
- CPRC emphasizes revenue mobilization to fund poverty reduction – not just aid.
- Climate change threat to fiscal base – eg Bangladesh. Need for global carbon taxes
- Growth recovery in rich countries – likely to cause another jump in food & energy prices

Country Context



Crispin Hughes/Panos

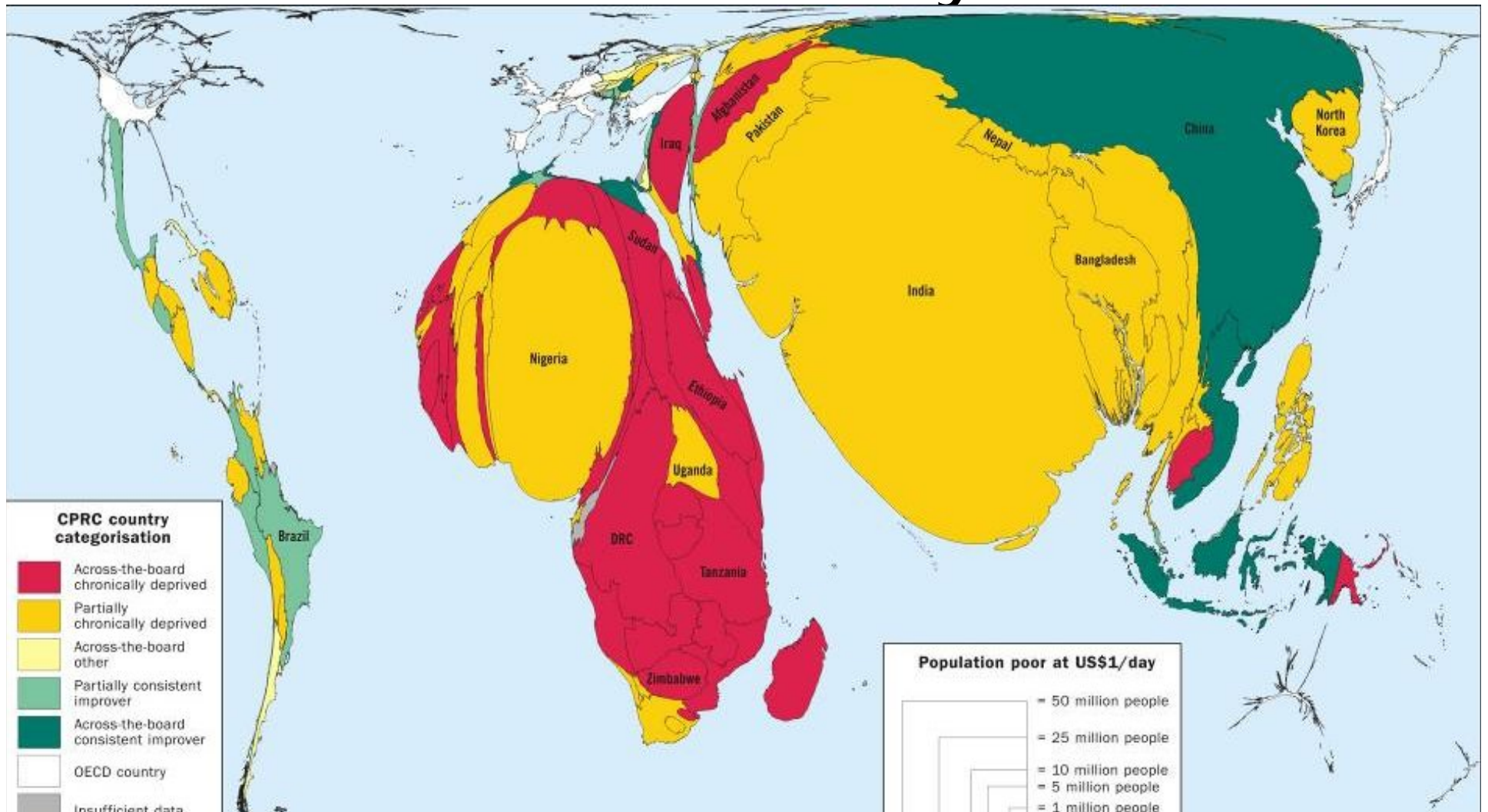
Chronically poor people face enormous risks

Purpose of the state should be to reduce *risk*

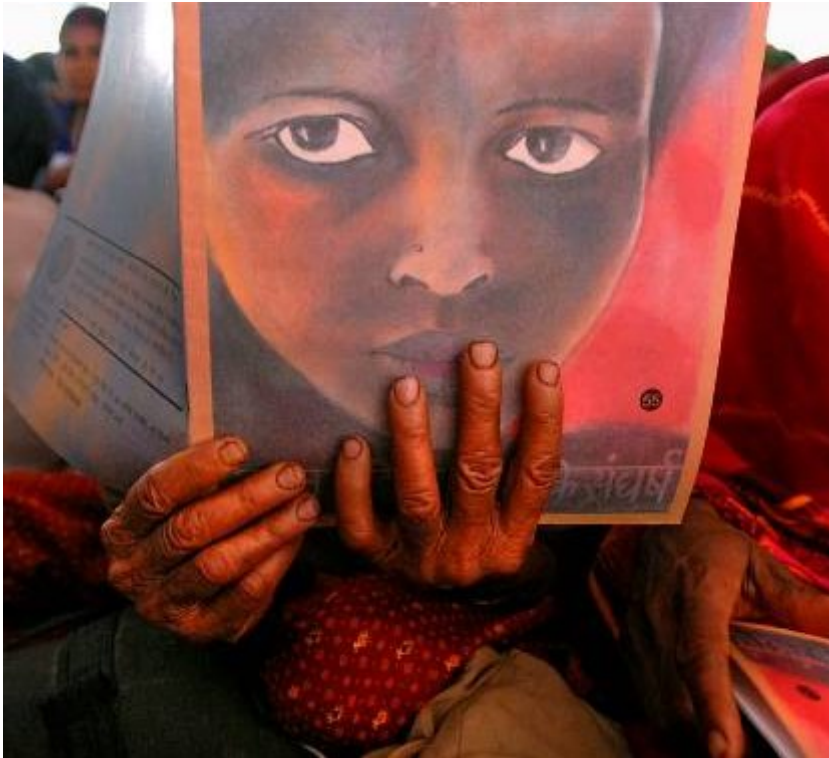
Many states ('fragile') ignore people's risks or, at worse, add to them

Creating the state-citizen relationship – social contract

Tailoring policy responses to country context



Chronic Poverty Report is a call to Action



Ami Vitale/Panos

Poverty reduction is not a technical 'fix'. It's a political act

Multi-party elections are only a beginning (Africa versus India)

Vital role for social movements

Bangladesh example eg BRAC

Deepening Engagement at Country Level

- Chronic poverty reports – Bangladesh & Uganda. India in process
- Substantial participation in political dialogue in India, including into latest plan
- Government of Uganda now focused on social protection with CPRC assistance
- Engagement with local media, including Bangladesh on climate change & poverty



Chronic Poverty
Research Centre

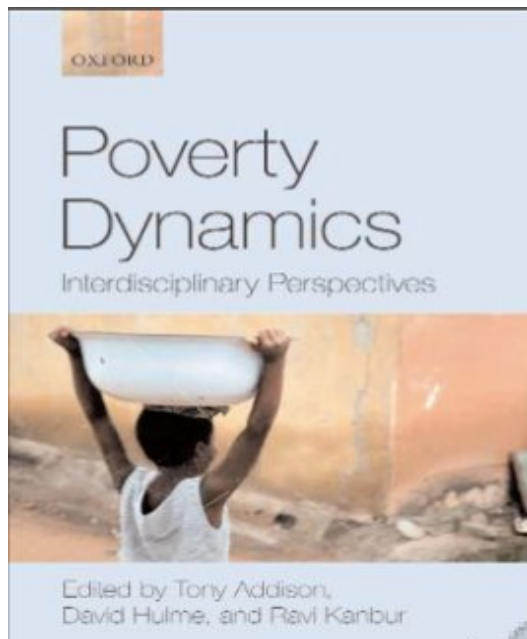


CHRONIC POVERTY IN UGANDA: The Policy Challenges



Chronic Poverty
Research Centre

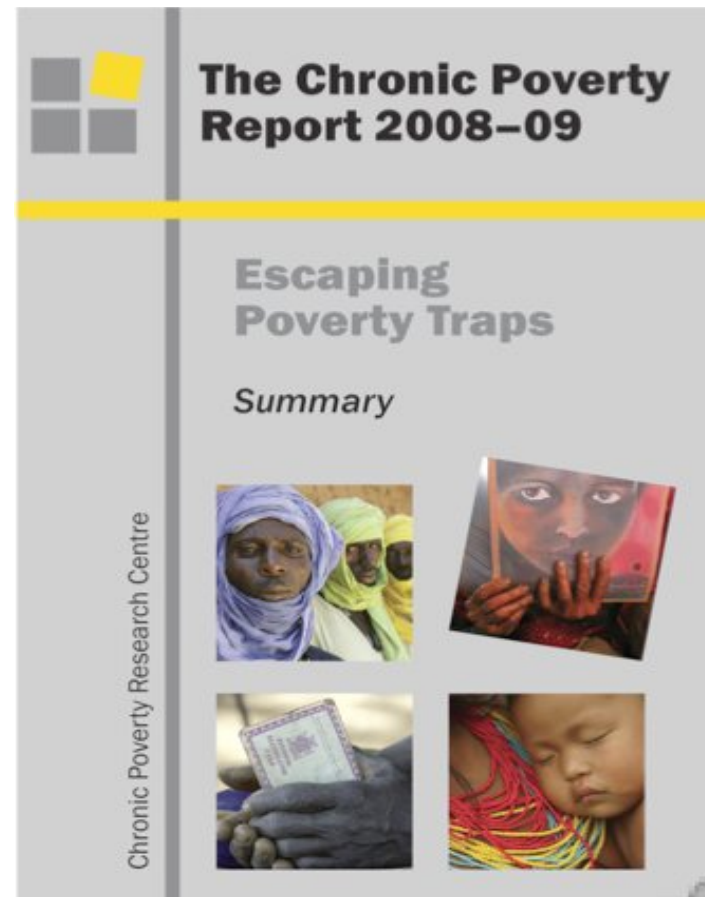
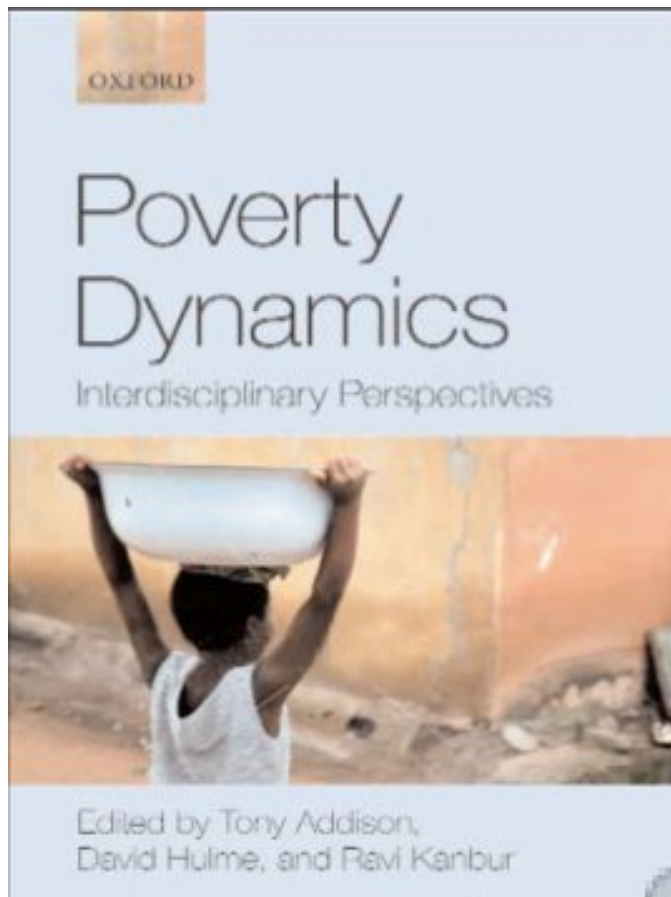
Poverty Dynamics: Interdisciplinary Perspectives



Tony Addison
David Hulme
Ravi Kanbur



Chronic Poverty
Research Centre



www.chronicpoverty.org



Abbie Traylor-Smith/Panos